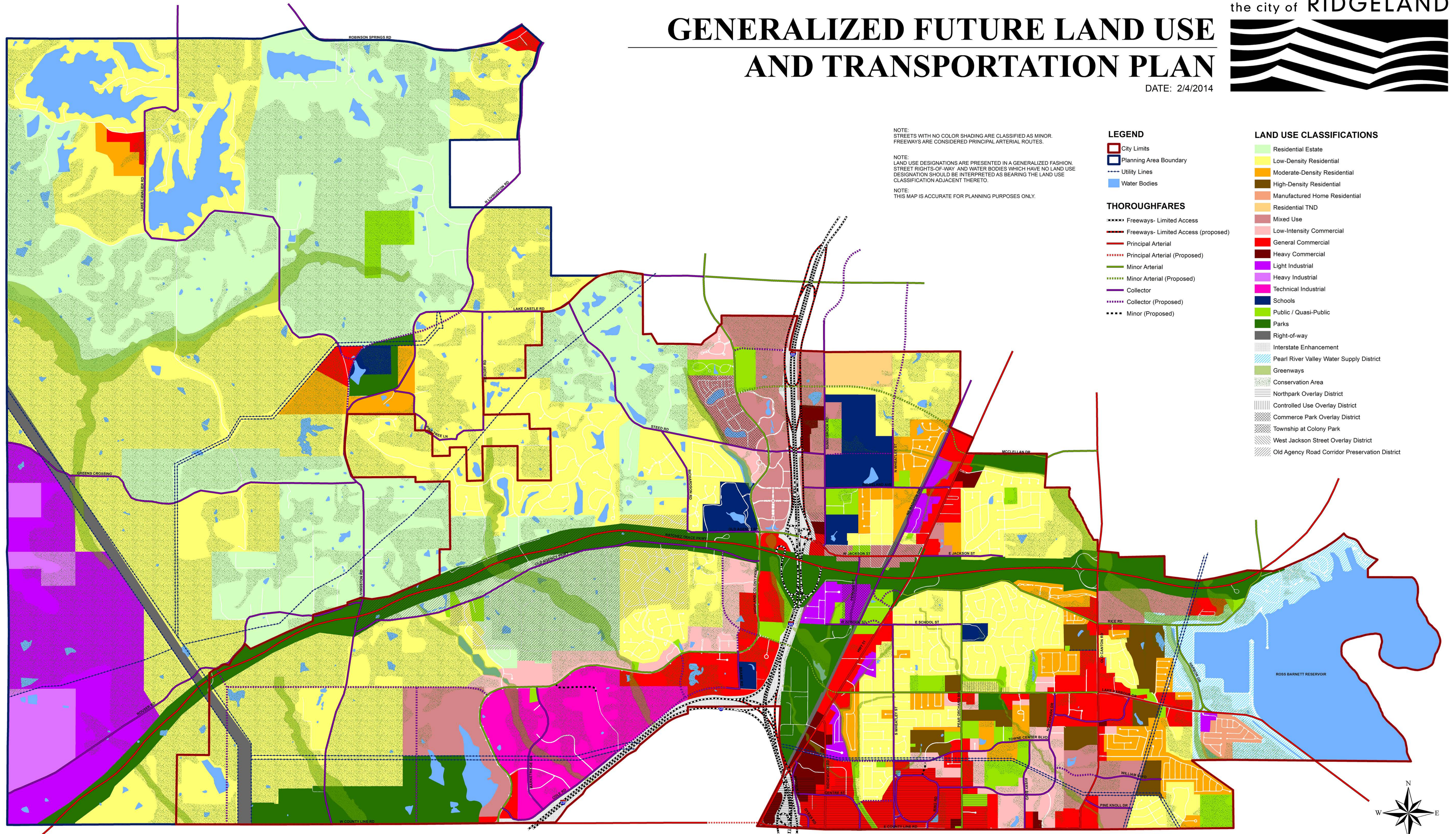


# GENERALIZED FUTURE LAND USE AND TRANSPORTATION PLAN

DATE: 2/4/2014

the city of RIDGELAND



NOTE:  
STREETS WITH NO COLOR SHADING ARE CLASSIFIED AS MINOR.  
FREEWAYS ARE CONSIDERED PRINCIPAL ARTERIAL ROUTES.

NOTE:  
LAND USE DESIGNATIONS ARE PRESENTED IN A GENERALIZED FASHION.  
STREET RIGHTS-OF-WAY AND WATER BODIES WHICH HAVE NO LAND USE  
DESIGNATION SHOULD BE INTERPRETED AS BEARING THE LAND USE  
CLASSIFICATION ADJACENT THERETO.

NOTE:  
THIS MAP IS ACCURATE FOR PLANNING PURPOSES ONLY.

### LEGEND

- City Limits
- Planning Area Boundary
- Utility Lines
- Water Bodies

### THOROUGHFARES

- Freeways- Limited Access
- Freeways- Limited Access (proposed)
- Principal Arterial
- Principal Arterial (Proposed)
- Minor Arterial
- Minor Arterial (Proposed)
- Collector
- Collector (Proposed)
- Minor (Proposed)

### LAND USE CLASSIFICATIONS

- Residential Estate
- Low-Density Residential
- Moderate-Density Residential
- High-Density Residential
- Manufactured Home Residential
- Residential TND
- Mixed Use
- Low-Intensity Commercial
- General Commercial
- Heavy Commercial
- Light Industrial
- Heavy Industrial
- Technical Industrial
- Schools
- Public / Quasi-Public
- Parks
- Right-of-way
- Interstate Enhancement
- Pearl River Valley Water Supply District
- Greenways
- Conservation Area
- Northpark Overlay District
- Controlled Use Overlay District
- Commerce Park Overlay District
- Township at Colony Park
- West Jackson Street Overlay District
- Old Agency Road Corridor Preservation District

