

# GENERAL ELECTION INFORMATION

**WARD 1:** Word of Life Church Highland Colony

**WARD 2:** Old Town Wesley Church

**WARD 3:** (A) Pat McGowen Center (Holmes)  
(B) Trace Ridge Baptist Church

★ Please remember to check your voter registration card to determine your Ward 3 location.

**WARD 4:** Colonial Heights Baptist Church

**WARD 5:** Ridgeland Recreation Center

**WARD 6:** Mt. Charity Baptist Church

**Absentee voting and voter registration will occur at Ridgeland City Hall during the following timeframe:**

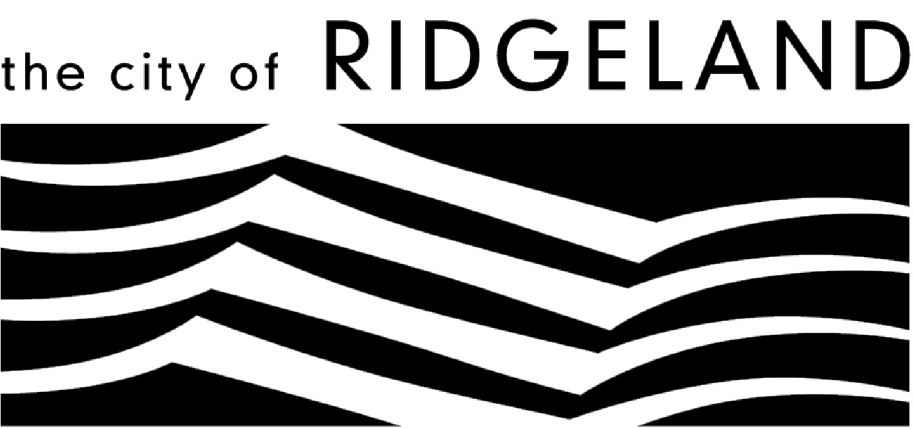
- April 18 – 28: Monday thru Friday from 8:00 a.m. – 5:00 p.m.
- April 29 – May 2 from 8:00 a.m. – 7:00 p.m.

**Absentee voting will ONLY occur at Ridgeland City Hall during the following timeframe:**

- May 5 – 30: Monday thru Friday from 8:00 a.m. – 5:00 p.m.
- Saturday, May 24 from 8:00 a.m. – 12:00 p.m.
- Saturday, May 31 from 8:00 a.m. – 12:00 p.m. (last day to absentee vote)

★ Please remember to check your polling locations, as they may have changed since the last General Election. For questions, call City Hall at 601-856-7113.

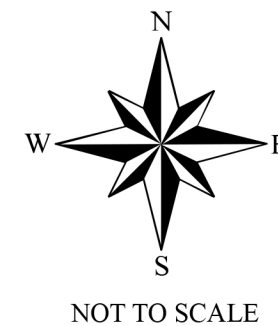
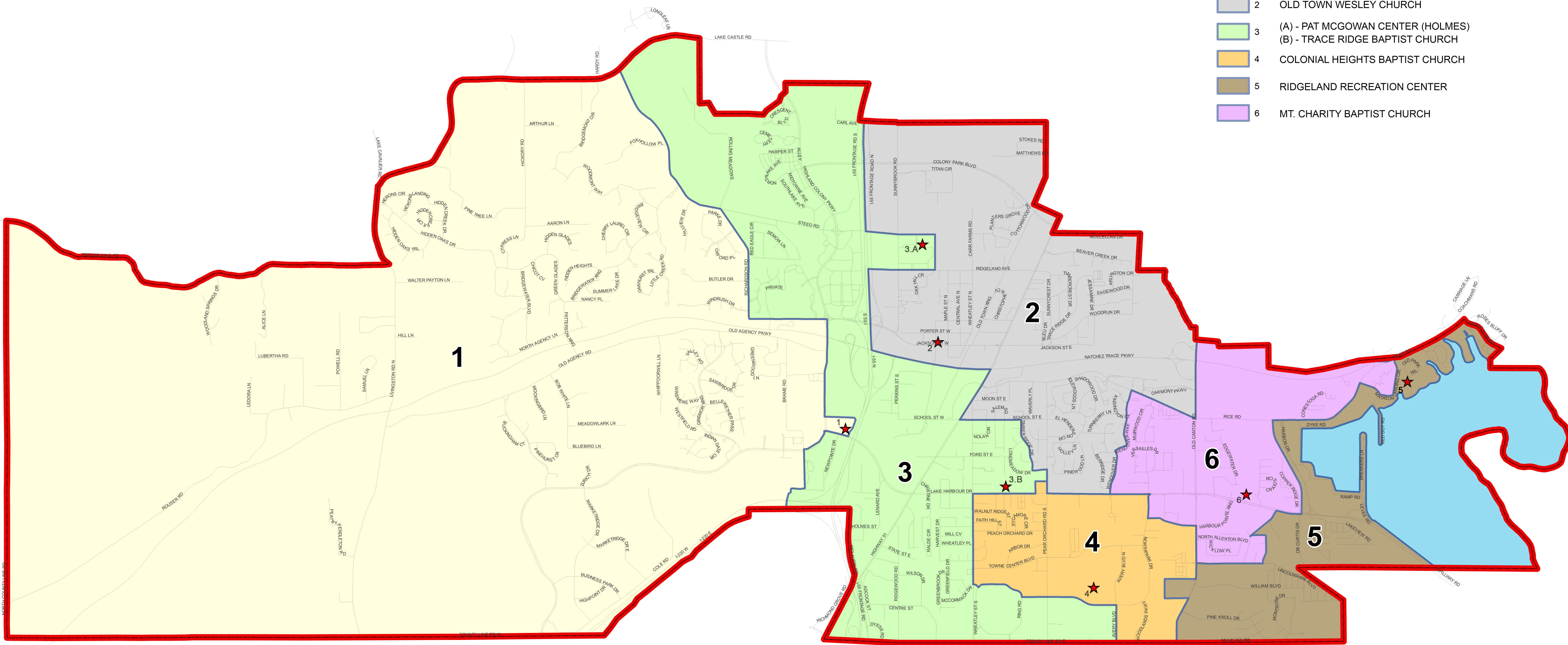




# 2024 WARD BOUNDARIES

DATE: JANUARY 2024

WARD NUMBER	POLLING LOCATION
1	WORD OF LIFE CHURCH HIGHLAND COLONY
2	OLD TOWN WESLEY CHURCH
3	(A) - PAT MCGOWAN CENTER (HOLMES) (B) - TRACE RIDGE BAPTIST CHURCH
4	COLONIAL HEIGHTS BAPTIST CHURCH
5	RIDGELAND RECREATION CENTER
6	MT. CHARITY BAPTIST CHURCH



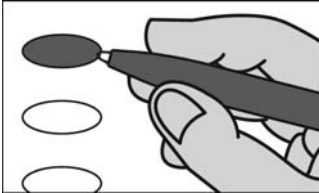
11

21

**OFFICIAL BALLOT  
STATE OF MISSISSIPPI  
MADISON COUNTY  
CITY OF RIDGELAND  
2025 GENERAL ELECTION  
TUESDAY, JUNE 3, 2025**

Ridgeland City Ward 1  
**BALLOT STYLE 1**

**INSTRUCTIONS TO VOTER:**



Fill in the oval to the left of the name of your choice. You must blacken the oval completely using a dark pen, and do not make any marks outside of oval. Do not use a red pen, felt tip pen, or any type of pencil.

**DO NOT CROSS OUT** - If you change your mind, exchange your ballot for a new one. If you tear, soil, deface or erroneously mark this ballot, return it and obtain another.

40

41

**For City of Ridgeland  
Mayor**  
Vote for ONE

- 42
- ☐ Gene F. McGee Republican
- 43
- ☐ Write-In

**For City of Ridgeland  
Alderman at Large**  
Vote for ONE

- ☐ D.I. Smith Republican
- ☐ Write-In

51

**For City of Ridgeland  
Alderman Ward 1**  
Vote for ONE

- ☐ Ken Heard Republican
- ☐ Write-In

**END OF BALLOT**

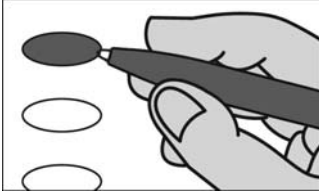
11

21

**OFFICIAL BALLOT  
STATE OF MISSISSIPPI  
MADISON COUNTY  
CITY OF RIDGELAND  
2025 GENERAL ELECTION  
TUESDAY, JUNE 3, 2025**

Ridgeland City Ward 2  
**BALLOT STYLE 2**

**INSTRUCTIONS TO VOTER:**



Fill in the oval to the left of the name of your choice. You must blacken the oval completely using a dark pen, and do not make any marks outside of oval. Do not use a red pen, felt tip pen, or any type of pencil.

**DO NOT CROSS OUT** - If you change your mind, exchange your ballot for a new one. If you tear, soil, deface or erroneously mark this ballot, return it and obtain another.

40

41

**For City of Ridgeland  
Mayor**  
Vote for ONE

- 42
- ☐ Gene F. McGee Republican
- 43
- ☐ Write-In

**For City of Ridgeland  
Alderman at Large**  
Vote for ONE

- ☐ D.I. Smith Republican
- ☐ Write-In

52

**For City of Ridgeland  
Alderman Ward 2**  
Vote for ONE

- ☐ Chuck Gautier Republican
- ☐ Walter Young Jr. Democrat
- ☐ Write-In

**END OF BALLOT**



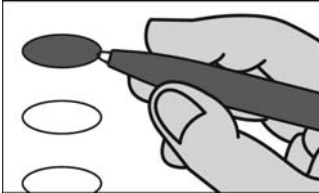
11

21

**OFFICIAL BALLOT  
STATE OF MISSISSIPPI  
MADISON COUNTY  
CITY OF RIDGELAND  
2025 GENERAL ELECTION  
TUESDAY, JUNE 3, 2025**

Ridgeland City Ward 3A  
**BALLOT STYLE 3**

**INSTRUCTIONS TO VOTER:**



Fill in the oval to the left of the name of your choice. You must blacken the oval completely using a dark pen, and do not make any marks outside of oval. Do not use a red pen, felt tip pen, or any type of pencil.

**DO NOT CROSS OUT** - If you change your mind, exchange your ballot for a new one. If you tear, soil, deface or erroneously mark this ballot, return it and obtain another.

40

41

**For City of Ridgeland  
Mayor**  
Vote for ONE

- 42
- ☐ Gene F. McGee Republican
- 43
- ☐ Write-In

**For City of Ridgeland  
Alderman at Large**  
Vote for ONE

- ☐ D.I. Smith Republican
- ☐ Write-In

**For City of Ridgeland  
Alderman Ward 3**  
Vote for ONE

- 53
- ☐ Howard Brown Democrat
- ☐ Kevin Holder Republican
- ☐ Write-In

**END OF BALLOT**

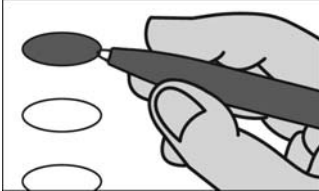
11

21

**OFFICIAL BALLOT  
STATE OF MISSISSIPPI  
MADISON COUNTY  
CITY OF RIDGELAND  
2025 GENERAL ELECTION  
TUESDAY, JUNE 3, 2025**

Ridgeland City Ward 3B  
**BALLOT STYLE 3**

**INSTRUCTIONS TO VOTER:**



Fill in the oval to the left of the name of your choice. You must blacken the oval completely using a dark pen, and do not make any marks outside of oval. Do not use a red pen, felt tip pen, or any type of pencil.

**DO NOT CROSS OUT** - If you change your mind, exchange your ballot for a new one. If you tear, soil, deface or erroneously mark this ballot, return it and obtain another.

40

41

**For City of Ridgeland  
Mayor**  
Vote for ONE

- 42
- ☐ Gene F. McGee Republican
- 43
- ☐ Write-In

**For City of Ridgeland  
Alderman at Large**  
Vote for ONE

- ☐ D.I. Smith Republican
- ☐ Write-In

**For City of Ridgeland  
Alderman Ward 3**  
Vote for ONE

- 54
- ☐ Howard Brown Democrat
- ☐ Kevin Holder Republican
- ☐ Write-In

**END OF BALLOT**

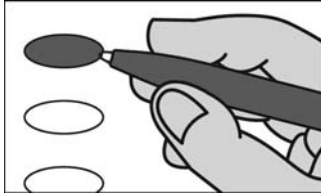
11

21

**OFFICIAL BALLOT  
STATE OF MISSISSIPPI  
MADISON COUNTY  
CITY OF RIDGELAND  
2025 GENERAL ELECTION  
TUESDAY, JUNE 3, 2025**

Ridgeland City Ward 4  
**BALLOT STYLE 4**

**INSTRUCTIONS TO VOTER:**



Fill in the oval to the left of the name of your choice. You must blacken the oval completely using a dark pen, and do not make any marks outside of oval. Do not use a red pen, felt tip pen, or any type of pencil.

**DO NOT CROSS OUT** - If you change your mind, exchange your ballot for a new one. If you tear, soil, deface or erroneously mark this ballot, return it and obtain another.

40

41

**For City of Ridgeland  
Mayor**  
Vote for ONE

- 42
- ☐ Gene F. McGee Republican
- ☐ Write-In

44

**For City of Ridgeland  
Alderman at Large**  
Vote for ONE

- ☐ D.I. Smith Republican
- ☐ Write-In

51

**For City of Ridgeland  
Alderman Ward 4**  
Vote for ONE

- ☐ Brian Ramsey Republican
- ☐ Write-In

**END OF BALLOT**



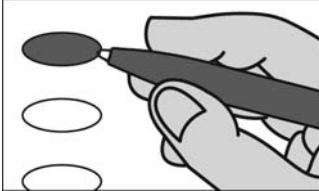
11

21

**OFFICIAL BALLOT  
STATE OF MISSISSIPPI  
MADISON COUNTY  
CITY OF RIDGELAND  
2025 GENERAL ELECTION  
TUESDAY, JUNE 3, 2025**

Ridgeland City Ward 5  
**BALLOT STYLE 5**

**INSTRUCTIONS TO VOTER:**



Fill in the oval to the left of the name of your choice. You must blacken the oval completely using a dark pen, and do not make any marks outside of oval. Do not use a red pen, felt tip pen, or any type of pencil.

**DO NOT CROSS OUT** - If you change your mind, exchange your ballot for a new one. If you tear, soil, deface or erroneously mark this ballot, return it and obtain another.

40

41

**For City of Ridgeland  
Mayor**  
Vote for ONE

- 42
- ☐ Gene F. McGee Republican
- ☐ Write-In

44

**For City of Ridgeland  
Alderman at Large**  
Vote for ONE

- ☐ D.I. Smith Republican
- ☐ Write-In

52

**For City of Ridgeland  
Alderman Ward 5**  
Vote for ONE

- ☐ Bill Lee Republican
- ☐ Write-In

**END OF BALLOT**

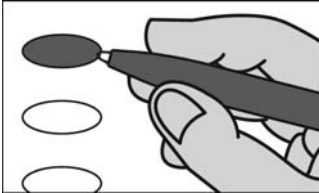
11

21

**OFFICIAL BALLOT  
STATE OF MISSISSIPPI  
MADISON COUNTY  
CITY OF RIDGELAND  
2025 GENERAL ELECTION  
TUESDAY, JUNE 3, 2025**

Ridgeland City Ward 6  
**BALLOT STYLE 6**

**INSTRUCTIONS TO VOTER:**



Fill in the oval to the left of the name of your choice. You must blacken the oval completely using a dark pen, and do not make any marks outside of oval. Do not use a red pen, felt tip pen, or any type of pencil.

**DO NOT CROSS OUT** - If you change your mind, exchange your ballot for a new one. If you tear, soil, deface or erroneously mark this ballot, return it and obtain another.

40

41

**For City of Ridgeland  
Mayor**  
Vote for ONE

- 42
- ☐ Gene F. McGee Republican
- ☐ Write-In

44

**For City of Ridgeland  
Alderman at Large**  
Vote for ONE

- ☐ D.I. Smith Republican
- ☐ Write-In

**For City of Ridgeland  
Alderman Ward 6**  
Vote for ONE

- 53
- ☐ Wesley Hamlin Republican
- ☐ Write-In

**END OF BALLOT**