



## **PRESS RELEASE**

Contact: City Staff  
Phone: (601) 856-7113

FOR IMMEDIATE RELEASE  
January 13, 2026

### **CITY OF RIDGELAND BEGINS SOUTH WHEATLEY STREET REHABILITATION PROJECT ON JANUARY 19**

The City of Ridgeland will begin work on the South Wheatley Rehabilitation Project on January 19. Hemphill Construction has been contracted to complete the project, which is expected to take approximately nine months to complete.

Construction will occur in phases and will require temporary lane closures throughout most of the project. Detour signage will be in place during each phase to help guide motorists safely through the area.

During Phase I, South Wheatley will remain open to two-way traffic. As the project progresses into Phases II and III, northbound traffic is expected to stay open for most of the remainder of construction. However, there will be brief periods when a full closure is necessary to allow crews to complete specific work.

Motorists are encouraged to follow posted detours, use caution while traveling through the work zone, and remain alert for construction workers.

The City will continue to share updates as the project moves through each phase. We appreciate the public's patience and cooperation as we work to improve roadway conditions and enhance safety for our community.

**###**

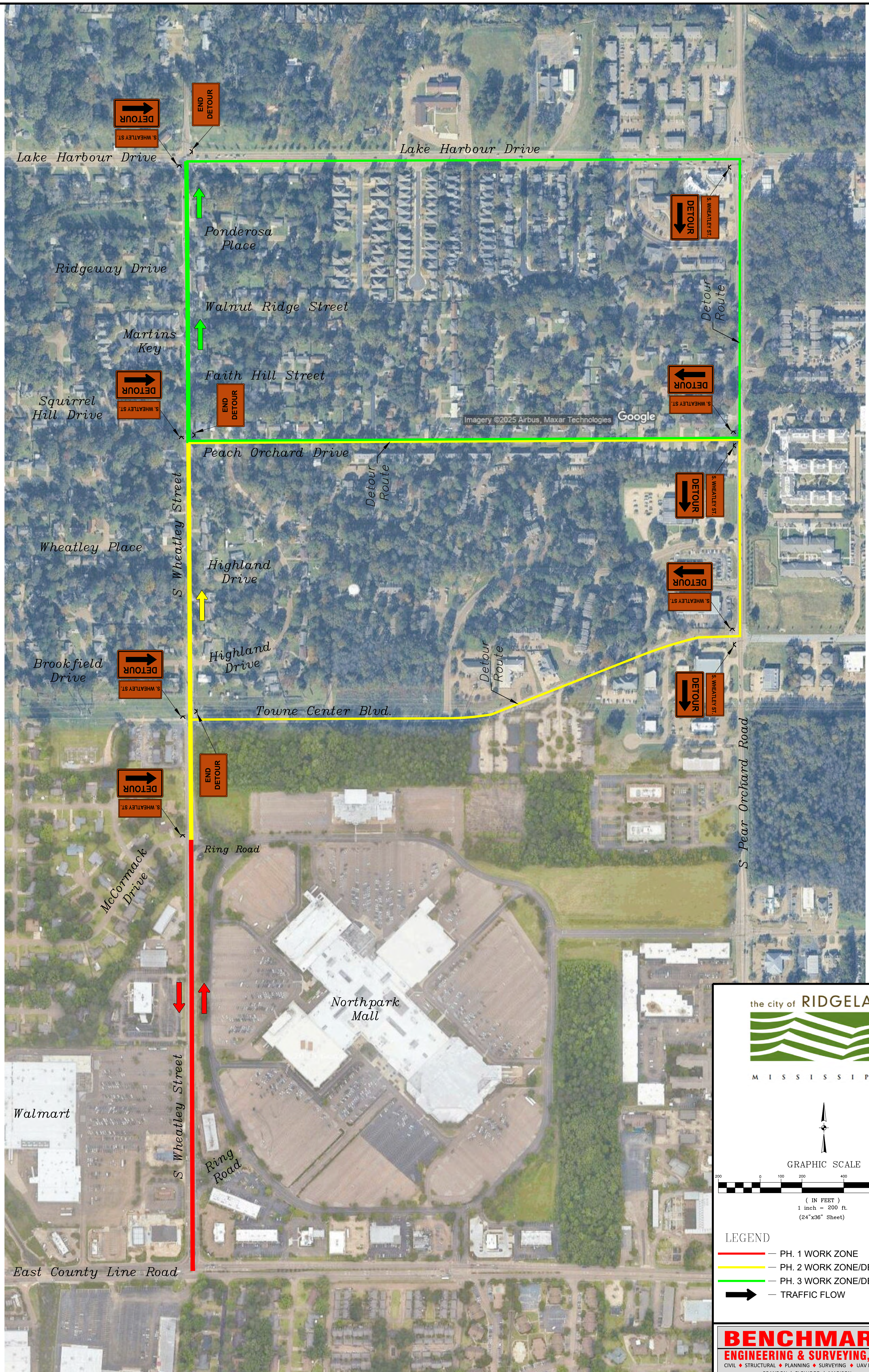
mailing address: p.o. box 217 • ridgeland, ms 39158  
street address: 100 W. School St. • ridgeland, ms 39157  
ph: 601.856.7113 • [www.ridgelandms.org](http://www.ridgelandms.org)

Gene F. McGee, cmo - mayor • Angela E. Richburg, mmc - city clerk / chief financial officer

board of aldermen: D.I. Smith, cmo, mayor pro tempore - at-large • Ken Heard, cmo - ward 1 • Chuck Gautier, cmo - ward 2  
Kevin Holder, cmo - ward 3 • Brian P. Ramsey, cmo - ward 4 • Bill Lee - ward 5 • Wesley Hamlin, cmo - ward 6



CITY OF RIDGELAND  
WHEATLEY STREET RECONSTRUCTION & SIDEWALK IMPROVEMENTS



# the city of RIDGELAND

M I S S I S S I P P I

## GRAPHIC SCALE

( IN FEET )

1 inch = 200 ft.

(24"x36" Sheet)

## LEGEND

- — PH. 1 WORK ZONE
- — PH. 2 WORK ZONE/DETOUR ROUTE
- — PH. 3 WORK ZONE/DETOUR ROUTE
- ➔ — TRAFFIC FLOW

**BENCHMARK**  
ENGINEERING & SURVEYING, LLC

CIVIL ♦ STRUCTURAL ♦ PLANNING ♦ SURVEYING ♦ UAV MAPPING

BRANDON | FLOWOOD | MADISON

EST. 2004

[www.benchmarks.net](http://www.benchmarks.net)