

VETERANS MEMORY PARK IN RIDGELAND, MS

SPONSORED
NCH LOCATION



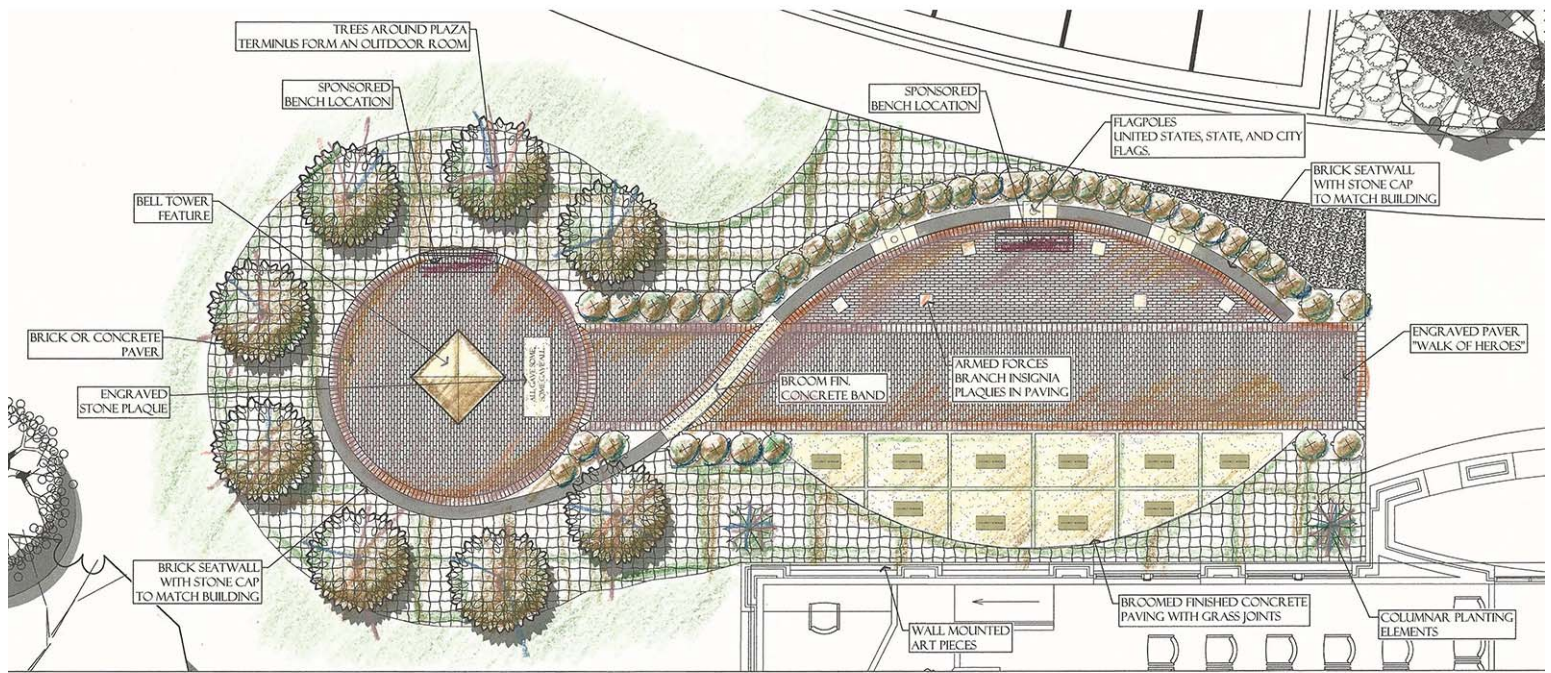
**FOR MORE INFORMATION, CONTACT:
VETERANS MEMORY PARK IN RIDGELAND COMMITTEE:**

Mike McCollum, Chairman - (601) 853-2027

Greg Starnes, Treasurer - (601) 898-5500



VETERANS MEMORY PARK IN RIDGELAND, MS



CONCEPTUAL PLAN



MILITARY BRANCH PLAQUES

SPONSORSHIP OPPORTUNITIES

\$200 - 4" x 8" Engraved Brick Paver (Located along the "Walk of Heroes")

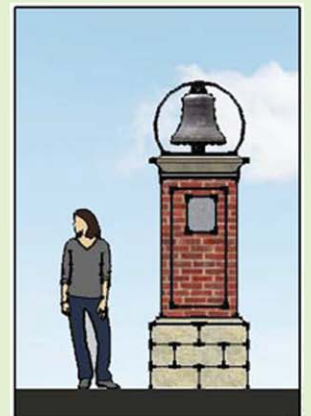
\$500 - 8" x 8" Engraved Brick Paver (Located around the Bell Tower)

(10) \$5,000 - Brass Plaque mounted on Concrete Paver

(2) \$10,000 - Brass Plaque mounted on Bench

(1) \$50,000 - Engraved Plaque at the Bell Tower

*All Engraved Bricks and Plaques must include the name(s) of Veteran(s)



**FOR MORE INFORMATION, CONTACT:
VETERANS MEMORY PARK IN RIDGELAND COMMITTEE:**

Mike McCollum, Chairman - (601) 853-2027
Greg Starnes, Treasurer - (601) 898-5500

VETERANS MEMORY PARK IN RIDGELAND, MS

NAME OF PERSON SUBMITTING THIS FORM: _____

PHONE NUMBER: _____

EMAIL ADDRESS: _____

SIGNATURE BRICK ORDER FORM

(NAME) LINE 1 _____

(RANK) LINE 2 _____

(BRANCH OF SERVICE) LINE 3 _____

THE FOLLOWING LINES ARE FOR USE WITH 8"X8" DOUBLE BRICKS ONLY.

(CONFLICT) LINE 4 _____

(DATES OF SERVICE) LINE 5 _____

(HOMETOWN OR HIGHEST MEDAL) LINE 6 _____

PLEASE ATTACH TYPED COPIES OF YOUR ORDER TO ASSURE CORRECT SPELLING AND
SUBMIT FORMS TO **CITY OF RIDGELAND, ATTN: MIKE McCOLLUM,**
PO BOX 317, RIDGELAND, MS 39158
AND MAKE CHECKS PAYABLE TO THE **"CITY OF RIDGELAND"**
FOR: **VETERANS MEMORY PARK IN RIDGELAND**

Mike McCollum, Chairman - (601) 853-2027
Greg Starnes, Treasurer - (601) 898-5500